

FOX WOOD SCHOOL



CHILD PROTECTION POLICY

Headteacher: Miss Lucinda Duffy

Woolston Learning Village
Fox Wood School
Holes Lane
Woolston
Warrington
WA1 4LS

Tel: 01925 811534

Review Date: September 2024






Adopted by the Governing Body:
Date: September 2023

CONTENTS PAGE

Contents	Page Number
Safeguarding Information sheet	3
- Safeguarding Team	
- Safeguarding Governor	
- Important Contacts	
Philosophy	4
Aims	4
Abuse	4
- Possible indicators of abuse	
o Signs and Symptoms	4
o Physical Abuse	5
o Emotional Abuse	5
o Sexual Abuse	6
o Neglect	7
- What to do if you have concerns	
Pupils with a child protection plan	8
- Child protection case conferences	8
Local Safeguarding Partnership	8
Safeguarding Children Team	8
Education Safeguarding Team	9
Every Child Matters	9
Early Help	9
Child-on-child abuse	10
- Responses	11
o For the young person who has been harmed	11
o For the young person who has displayed harmful behaviour	11
o After care	11
Recording and monitoring	12
Governors	13
Training	13
Recruitment of staff	13
Allegations against staff and volunteers	14
Passing on concerns/ whistleblowing	14
Teaching and learning styles	15
Provision for pupils in foundation stage	15
Resources	15
ICT Provision	15
- Internet Use	
- Filtering and Monitoring	16
- Photography, videos and other creative arts	16
Cross curricular links	17
Equal opportunities	17
Home-School liaison	17
Review	17
References	17
Appendix A – Professional Contribution to Child Protection Conferences	18
Appendix B – Staff Code of Conduct	20
Appendix C – Code of Conduct for volunteers, students and work experience	24
Appendix D – Filtering and Monitoring Statement 2023	26

Safeguarding Information Sheet

Safeguarding Team

Lianne Buchanan (DSL)	
Louise Messham (Deputy DSL)	
Lucinda Duffy (Head Teacher)	
Laura Simms (Pastoral Support Officer)	
Jade Ashton (Pupil Support Manager)	

Safeguarding Governor

Trish Chapman

Important Contacts

(Please remember to speak to a member of the safeguarding team should you have any concerns – if it is a concern about FGM it is **your** responsibility to call 999)

Organisation	Contact Number
MASH Children's Social Care	01925 443400
Education Safeguarding Team	01925 442928
Adult Social Care	01925 444239
Adult Safeguarding Team	01925 444078
Out of Hours Safeguarding Team	01925 444400
LADO – Becki Byron	01925 442079
NSPCC Whistle Blowing Advice Hotline	0800 028 0285
Concerns about FGM	999
Forced Marriage Unit	020 7008 0151
Local Prevent Officer – Andy McIntyre	01606 36 5239 0777 551 6940 prevent@cheshire.pnn.police.uk
Modern Slavery Helpline	08000 121 700 www.unseenuk.org
Crime Stoppers	0800 555 111

PHILOSOPHY

Child protection is the responsibility of all people who work with children, and schools do not operate in isolation but within the framework of multi-agency collaboration.

It is recognised that, statistically, pupils with behavioural difficulties and disabilities are most vulnerable to abuse and school staff who work with such pupils need to be particularly sensitive to signs of abuse. As a result of their day-to-day interaction with pupils, staff are well placed to observe these signs, changes in behaviour or failure to develop. Such signs may give rise to suspicion, but no more. They are not proof in themselves that abuse has occurred. Many of our pupils use specialist equipment including wheelchairs and standing frames and occasionally this equipment may also cause marks and staff are aware of this and should be observant.

This policy should be read in conjunction with the Safeguarding Policy.

AIMS

The aim at Fox Wood School is to raise awareness of Child Protection issues and to deal effectively with them. All of our pupils have learning difficulties and many have physical difficulties, these can provide additional barriers when recognising abuse and neglect.

At Fox Wood, Mrs Lianne Buchanan (designated person) is responsible for co-ordinating action within the school and liaising with other agencies. She is kept informed of the names of pupils with a 'Child Protection Plan'. The designated person will follow Warrington Safeguarding procedures and refer Child Protection issues to the local Children's Social Care Services (CSC) or the police (who are the investigative agencies in such cases). If unsure, school can seek advice from CSC or the Local Authority's safeguarding officer. Where the information to date is inconclusive the class team will be asked to continue to record information on CPOMS in order to monitor the situation.

The Headteacher, or Miss Louise Messham will deal with child protection duties in 'emergency' situations when Mrs Buchanan is unavailable. Mrs Trish Chapman is the governor with specific responsibility for safeguarding, including child protection.

ABUSE

There are four recognised categories of abuse:

1. Neglect
2. Physical injury
3. Sexual abuse
4. Emotional abuse

POSSIBLE INDICATORS OF ABUSE AND NEGLECT

Signs and Symptoms

Somebody may abuse or neglect a child by inflicting harm or by failing to act to prevent harm. Children may be abused in a family or in an institutional or community setting by those known to them or, more rarely, by others. Abuse can take place wholly online, or technology may be

used to facilitate offline abuse. Children may be abused by an adult or adults or by another child or children.

This list is not intended as a checklist, but to alert staff to a cluster of concerns and to identify several 'symptoms' which may be indicators of abuse. It should be remembered that the presence of such symptoms does not always indicate that the child has been abused.

1. **Physical abuse:** a form of abuse which may involve hitting, shaking, throwing, poisoning, burning or scalding, drowning, suffocating or otherwise causing physical harm to a child. Physical harm may also be caused when a parent or carer fabricates the symptoms of, or deliberately induces, illness in a child.
 - I. Unexplained or inconsistently explained bruises and welts:
 - On face, lips, mouth (especially in both eyes; or on a non-ambulant child).
 - On torso, back, buttocks and thighs of differing ages.
 - Clustered, forming regular patterns.
 - Reflecting shape of article used to inflict.
 - On several different areas.
 - II. Unexplained burns:
 - Cigarette, especially on soles, palms, back or buttocks.
 - Immersion burns/scalds (sock-like, glove-like).
 - Patterned - electric iron, etc.
 - III. Unexplained fractures:
 - To skull, nose, facial structure, ribs.
 - In various stages of healing.
 - Multiple or spinal fractures.
 - IV. Unexplained lacerations or abrasions:
 - To mouth, lips, gums, eyes.
 - To external genitalia.
 - V. Behaviour Indicators:
 - Wary/watchful of adult contact.
 - Behavioural extremes, aggressive/withdrawn.
 - Afraid to go home.
 - Reports abuse.
2. **Emotional abuse:** the persistent emotional maltreatment of a child such as to cause severe and adverse effects on the child's emotional development. It may involve conveying to a child that they are worthless or unloved, inadequate, or valued only insofar as they meet the needs of another person. It may include not giving the child opportunities to express their views, deliberately silencing them or 'making fun' of what they say or how they communicate. It may feature age or developmentally inappropriate expectations being imposed on children. These may include interactions that are beyond a child's developmental capability as well as overprotection and limitation of exploration and learning, or preventing the child from participating in normal social interaction. It may involve seeing or hearing the ill-treatment of another. It may involve serious bullying (including cyberbullying), causing children frequently to feel frightened or in danger, or the exploitation or corruption of children. Some level of emotional abuse is involved in all types of maltreatment of a child, although it may occur alone.
 - I. Physical Indicators:

- Failure to thrive

II. Behavioural Indicators:

- Habit disorders (sucking, biting, rocking)
- Conduct disorders (anti-social destructive).
- Behavioural extremes, passivity/demanding/aggressive.
- Regressive behaviour.

3. **Sexual abuse:** involves forcing or enticing a child or young person to take part in sexual activities, not necessarily involving a high level of violence, whether or not the child is aware of what is happening. The activities may involve physical contact, including assault by penetration (for example rape or oral sex) or non-penetrative acts such as masturbation, kissing, rubbing and touching outside of clothing. They may also include non-contact activities, such as involving children in looking at, or in the production of, sexual images, watching sexual activities, encouraging children to behave in sexually inappropriate ways, or grooming a child in preparation for abuse. Sexual abuse can take place online, and technology can be used to facilitate offline abuse. Sexual abuse is not solely perpetrated by adult males. Women can also commit acts of sexual abuse, as can other children. The sexual abuse of children by other children is a specific safeguarding issue in education. Staff must be aware of potential health needs that might arise following a sexual assault and should seek advice from the school Nursing Team.

I. Physical Indicators:

- Itching, soreness, discharge, bleeding
- Pain in passing urine, repeated urinary tract infections.
- Injuries to genital area.
- Faecal soiling, rectal bleeding.
- Sexual transmitted disease.
- Pregnancy (in teenagers, with unwillingness to name the father).
- Psychosomatic features, abdominal pain, headaches.
- Running away.

II. Behavioural Indicators:

- Sexualised play.
- Inappropriate sexual knowledge.
- Fear of undressing, routine medicals.
- Regressive behaviour and mood changes.
- Fear of adults.
- Sleep disturbance, altered eating patterns.
- Reduction in concentration.

4. **Neglect:** the persistent failure to meet a child's basic physical and/or psychological needs, likely to result in the serious impairment of the child's health or development. Neglect may occur during pregnancy, for example, as a result of maternal substance abuse. Once a child is born, neglect may involve a parent or carer failing to: provide adequate food, clothing and shelter (including exclusion from home or abandonment); protect a child from physical and emotional harm or danger; ensure adequate supervision (including the use of inadequate caregivers); or ensure access to appropriate medical care or treatment. It may also include neglect of, or unresponsiveness to, a child's basic emotional needs.

I. Physical Indicators:

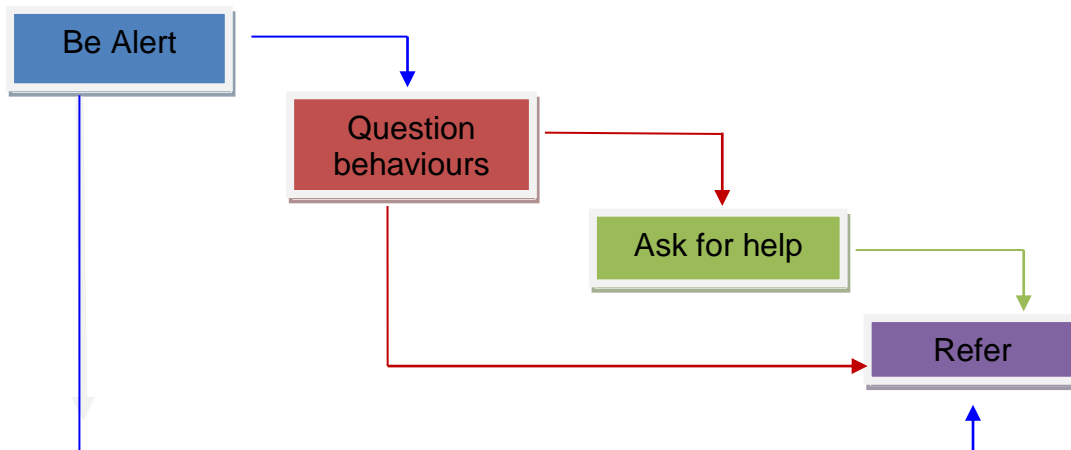
- Persistent hunger.
- Poor hygiene/inappropriate dress.
- Persistent lack of supervision.
- Unattended physical problems, medical needs.
- Abandonment.

II. Behavioural Indicators:

- Begging, stealing food, gorging.
- Fatigue.
- Attention seeking, poor school attainment.
- Unresponsive.

WHAT TO DO IF YOU HAVE CONCERNS

- There are four key steps to follow to help staff identify and respond appropriately to possible abuse and/or neglect



It may not always be appropriate to go through all four stages sequentially. **If a child is in immediate danger or is at risk of harm, you should refer to children's social care and/or the police.** Before doing so, staff should try to establish the basic facts. However, it is the role of social workers and the police to investigate cases and make a judgement on whether there should be statutory intervention and/or a criminal investigation. School staff should record, on CPOMS, all concerns and discussions about a child's welfare, the decisions made and the reasons for those decisions.

The first step is to be alert to the signs of abuse and neglect then to understand the procedures you need to follow.

If a child reports that they are being abused and/or neglected, you should reassure them that they are being taken seriously and will be supported. Listen to them and reassure them that you will take action to keep them safe. It is important to maintain confidentiality, but you should not promise that you won't tell anyone, as you may need to do so in order to protect the child. Children and young people should never be made to feel ashamed or that they are creating a problem by reporting any type of abuse, sexual violence or sexual harassment.

You should discuss your concerns with the Designated Safeguarding Lead (DSL). If you have concerns about the safety or welfare of a child and feel they are not being acted upon by your manager/designated safeguarding lead, it is your responsibility to take action. The Education Safeguarding Team contact details are available on the noticeboard in the staff room.

If you believe that a child may be a child in need, or that a child is being harmed or is likely to be, a referral should be made immediately to children's social care. This referral can be made

by **any practitioner in exceptional circumstances**, such as an emergency or a genuine concern that appropriate action has not been taken. The number to contact is Children with Disabilities on 01925 442428. The referral will **usually** be made by a member of the Safeguarding Team.

PUPILS WITH A CHILD PROTECTION PLAN

Children's Social Care Services must inform the school when a pupil has a Child Protection Plan. The school must pass this information immediately to the new school if a pupil transfers. Once a pupil no longer has a Child Protection Plan, records are kept for seven years and a note is placed on the pupil's file on CPOMS.

CHILD PROTECTION CASE CONFERENCES

Reports prepared for child protection conferences follow Warrington Borough Council's set proforma (see appendix A). Such reports should be objective and based on evidence, and will be completed by staff working with the child. An aide memoire is available on the network to support staff to write this.

At the meeting, it may be decided to add a pupil's name to the list of children who have a Child Protection Plan. A Child Protection Plan is a written record of how a pupil will be kept safe. More conferences will follow to make sure what is decided in the plan actually happens.

The DSL or Deputy DSL or Headteacher will attend child protection conferences in order to share this information with other professionals. The child protection report will be e-mailed prior to the conference, printed copies taken as requested and a copy shared with parents before the day of the meeting.

LOCAL SAFEGUARDING PARTNERSHIP

"Working Together to Safeguard Children" reflects changes in the law, including the Children and Social Work Act (2017). New safeguarding partners and child death review partner arrangements are now in place. Locally, the three safeguarding partners (the local authority; health commissioners and the police) will make arrangements to work together with appropriate relevant agencies, including schools, to safeguard and promote the welfare of local children, including identifying and responding to their needs.

Keeping Children Safe in Education 2023 states that 'the three safeguarding partners should make arrangements to allow all schools and colleges in the local area to be fully engaged, involved and included in safeguarding arrangements.'

SAFEGUARDING CHILDREN TEAM

The Safeguarding Children Team's responsibilities include keeping a list of pupils who have a Child Protection Plan for the Warrington area and collecting statistical information. They work in partnership with other agencies to develop policies and procedure and to provide training on safeguarding matters. One of the main responsibilities for staff on the unit is to chair Child Protection Case Conferences.

The unit also ensures that all pupils who are looked after by the local authority (Children in Care) have regular review meetings and to check that the care plan is meeting their needs.

EDUCATION SAFEGUARDING TEAM (EST)

This team supports schools to safeguard vulnerable young people. They can be contacted for advice, information and support when dealing with safeguarding and child protection issues. In exceptional circumstances, the member of staff is able to contact the EST themselves – the email address is available on the staff room notice board and phone number is detailed above. Regular newsletters are received from the EST and these are shared with staff.

EVERY CHILD MATTERS

The Children Act 2004 is the legislation basis on which reform of children's services has been based. Children and young people told the government that five outcomes are key to well-being in child health and later life. These five outcomes are:

- Being healthy
- Staying safe
- Enjoying and achieving
- Making a positive contribution
- Achievement and economic well-being

It is clear that no single agency can ensure that pupils are achieving their outcomes, meaning that all agencies must work together to co-ordinate and deliver services to families. Schools have a pivotal role to play in multi-agency safeguarding arrangements in line with statutory guidance Working Together to Safeguard Children, which promotes integrated, multi-disciplinary working to support pupils and young people in achieving these outcomes.

EARLY HELP

This means providing support as soon as it is needed. An early help assessment can be undertaken by any professional who should provide support to the child and family, act as an advocate and co-ordinate the delivery of support services. It is completed in partnership with the family and a range of organisations in order to create a package of support. Staff at Fox Wood may be required to support other agencies and professionals in an Early Help Assessment and the Pastoral Support Officer may, in some cases, act as the lead professional.

The Family Support Model has been developed to assist in multidisciplinary working, acting as a guide for all professionals who work with children, young people and families. The model aims to:

- Provide a framework for co-ordinated multi-disciplinary working to support children and young people in achieving the five outcomes.
- Focus on the early identification of children and young people with additional support needs and provide appropriate, timely and co-ordinated interventions.
- Minimise duplication in service delivery while maximising the efficiency of local resources.
- Promote a shared responsibility between all services working with children and young people to meet their needs.
- Create a common language and clear procedures for integrated working across all services.
- Recognise that children/young people and their families have differing levels of need and that services, from preventative through to child protection, should be developed to meet those needs.

As all of our pupils at Fox Wood have SEND, there are many pupils who might benefit from early help. We endeavour to involve the pupil in the assessment wherever possible.

The model sets out four levels of help depending on how much support is needed from universal (Level 1) to intensive support (Level 4).

An important element of safeguarding is for agencies to work together to safeguard and promote the welfare of children. This is in greater detail in 'Working Together to Safeguard Children 2018' and "Keeping Children Safe in Education, 2023".

The Pan - Cheshire Multi- Agency escalation procedure is in place for resolving inter- agency professional challenges when working with children and families. If staff feel that a practitioner or agency is not acting in the best interests of the child, young person or family, they have a responsibility to respectfully challenge the practitioner or agency and escalate that concern if resolution is not achieved.

The process involves up to 4 steps to be completed:

Step 1- professionals resolving disadvantages

Step 2- safeguarding leads/ line manager involvement

Step 3- LSCB board members involvement

Step 4- LSCB chair involved

CHILD-ON-CHILD ABUSE

Children can abuse other children (often referred to as child-on-child abuse). There are many forms of abuse that may occur between peers and these are described below and followed by sections giving advice and support on action to be taken in relation to both the victim and the perpetrator of the abuse. It should be noted that there can be considerable overlap between different types of child-on-child abuse.

Staff are encouraged to maintain an attitude of "it could happen here". **There is a zero-tolerance approach to child-on-child abuse at Fox Wood School.** Staff will challenge any inappropriate behaviour between children and young people and will not downplay this behaviour. Staff will seek advice from the DSL or a member of the Safeguarding Team if they have any concerns about child-on-child abuse.

Physical abuse may include hitting, kicking, shaking, biting, hair pulling, or otherwise causing physical harm to another person. It is important to understand why a young person has engaged in such behaviour (including whether it has happened accidentally) before considering the action or punishment to be undertaken.

Bullying is unwanted, aggressive and/or hurtful behaviour (physical, emotional or both) that involves a real or perceived power imbalance. The behaviour is repeated, or has the potential to be repeated, over time. Both young people who are bullied and who bully others may have serious, lasting problems.

Bullying behaviours cause harm or upset to others, these behaviours may be passive or aggressive but to be considered bullying, must be purposeful and persistent with the intent to cause harm, physically or emotionally.

Bullying includes actions such as making threats, spreading rumours, attacking someone physically or verbally or for a particular reason e.g. size, hair colour, gender, sexual orientation, and excluding someone from a group on purpose. Further detail is in the Anti-Bullying Policy. An allegation of child-on-child abuse will be addressed through the same

process as any safeguarding issue. Advice should be sought from the DSL and information should be gathered as soon as possible to ascertain the true facts.

Sexually harmful behaviour from young people is not always contrived or with the intent to harm others. Sexually harmful behaviour may range from inappropriate sexual language, inappropriate role play, sexually touching another, sexual violence, sexual harassment, upskirting, sexting (also known as youth produced sexual imagery).

Cyberbullying includes the use of phones and computers/electronic devices to harass, threaten or intimidate someone and it can include: instant messaging; e-mail; chat rooms; or social networking sites such as Facebook and X. It may constitute a criminal offence under the Sexual Act 2003. Outside of the immediate support young people may require in these instances, the school may have no choice but to involve the police to investigate these situations.

RESPONSES

Parents of both parties will need to be informed after advice has been received from the police or social care if applicable.

For the young person who has been harmed

The appropriate support required depends on the individual young person. It may be that they wish to seek counselling via their GP or one-to-one support from a familiar staff member. It may also be that they feel able to deal with the incident(s) on their own or with support of family and friends, in which case it is necessary that this young person continues to be monitored and offered support should they require it in the future. If the incidents are of a bullying nature, the young person may need support in improving peer groups/relationships with other young people or some restorative justice work with all those involved may be required.

Other interventions that could be considered may target a whole class for example a speaker on cyberbullying, relationship abuse etc. It may be that through PSHCE certain issues can be discussed and debated at an appropriate level.

For the young person who has displayed harmful behaviour

In this circumstance it is important to find out why the young person has behaved in a harmful manner. In such cases support such as one to one mentoring or counselling may also be necessary. Particular support from identified services may be necessary through an Early Help referral and the young person may require additional support from family members.

Once the support required to meet the individual needs of the young person has been met, it is important that young person receives a consequence for their behaviour.

After care

It is important that following the incident the young people involved continue to feel supported and receive help even if they have stated that they are managing the incident. Regular reviews with the young people following the incident(s) are imperative.

At Fox Wood a "Safeguarding Policy for pupils" is in place, so that they are aware who to talk to if they are being bullied, hit etc. There are also signs around the school stating that pupils can go to see the Head or Deputy if they are worried.

At Fox Wood we deal with a wide range of behaviours on a day-to-day basis, and these are dealt with via school-based processes. These are outlined in the following policies:

- Behaviour
- Anti-bullying
- Positive Handling

We also act to minimise the risk of child-on-child abuse by ensuring we provide a safe environment, promoting positive standards of behaviour and providing safeguarding information through the curriculum via PSHCE and other curriculum opportunities.

RECORDING AND MONITORING

Well-kept records are essential to good child protection practice. Our school is clear about the need to record any concerns held about a pupil, the status of such records and when they should be passed over to other agencies. The Safeguarding Team liaises with other agencies involved by monitoring the progress of pupils placed with a Child Protection Plan, by submitting reports to social care departments and case conferences, and by being present at child protection conferences. All staff involved have a professional responsibility to share relevant information, and such child protection information is held securely within CPOMS. The school recognises that it is an agent of referral and not of investigation.

Confidentiality is an issue which needs to be discussed and fully understood by all those working with children, particularly in the context of child protection. The only purpose of confidentiality in this respect is to benefit the pupil.

CPOMS is our software application for monitoring child protection, safeguarding and a range of pastoral and welfare issues. Working alongside the school's existing safeguarding processes, CPOMS helps with the management and recording of child protection and safeguarding concerns. Every member of staff in school has an obligation to report any concerns which they may have in a clear and comprehensive manner. CPOMS allows them to record information in a central repository and have relevant people alerted immediately. The Safeguarding Team are able to build a chronology around a pupil, detail how concerns were followed up and resolved, notes of actions taken, decisions reached and the outcome. CPOMS records can be used to produce detailed reports for social care, Case Conferences, Governors etc.

The chronology around a pupil is built automatically and trends are much easier to spot than they would be on paper. Members of staff from across school can add information to CPOMS allowing the Safeguarding Team to take appropriate follow up action and it has been tailored to meet our school's exact needs.

Records will be kept for 7 years after the pupils 18th birthday.

If a pupil leaves Fox Wood School, their Child Protection files must be transferred as soon as possible, and we must ensure secure transit and confirmation of receipt (Keeping Children Safe in Education 2023). If the receiving school also uses CPOMS, this information can be accessed by them electronically.

GOVERNORS

The Governor with responsibility for Child Protection is Mrs Trish Chapman, and she meets half termly with identified members of the Safeguarding Team. The governing body has an overarching role in ensuring that all policies, procedures and training are effective and comply with the law. Governors receive a written termly safeguarding report from the DSL.

In line with Keeping Children Safe in Education 2023, Governors recognise that children must be kept safe if the school or college premises are being used for other activities. If services or activities are provided by the school or college, under direct supervision from staff, our own arrangements for child protection will apply. If another organisation is providing services or activities on the site, the governing body should ensure that appropriate safeguarding and child protection policies and procedures are in place. Keeping Children Safe in Education includes information on responding to allegations relating to incidents occurring when an individual or organisation uses a school's premises. As with all safeguarding allegations, school follows our safeguarding policies and procedures, including informing the Local Authority Designated Officer (LADO).

TRAINING

All staff should take part in in-service training courses which lead to a greater understanding of the signs and symptoms of child abuse. They also need to be familiar with Warrington Safeguarding procedures and Children's Social Care procedures for dealing with individual cases. Mrs Buchanan has access to the Warrington Area Child Protection Committee Manual of Procedures and Warrington Borough Council's manual for Training Primary and Secondary staff in Child Protection. Recognition should also be given to the roles and responsibilities of other agencies. The designated person for child protection will continue to attend training relevant to her role and staff may discuss any child protection concerns they may have with her.

- The Child Protection Co-ordinator attends 1-day appropriate training annually and more frequently when changes of procedure require it, or appropriate training is provided.
- All staff, who are in contact with pupils receive training and information in child protection annually, and more frequently when changes in procedure require it. Updates are regularly provided.
- Anyone joining the school staff will be fully briefed in their induction regarding child protection and safeguarding procedures.
- Governors attend training and receive regular updates.

RECRUITMENT OF STAFF

Checks on staff alone will not prevent harm to children. However, checks on staff who work with pupils are part of the landscape of safe practice to ensure that children are kept safe and help to deter, reject or identify people who might abuse children. Schools need to have robust record keeping in place to demonstrate that the safeguarding of children is secure. Fox Wood follows the LA Vetting and Safe Recruitment Policy. All staff at Fox Wood have had an enhanced DBS which includes barred list information. All new teachers undergo a Prohibition Order check. This information is stored on the Single Central Record (SCR). School informs candidates and completes online searches as part of due diligence pre-recruitment checks on shortlisted candidates. The Headteacher, Deputy Headteacher, chair of governors and admin manager have attended safer recruitment training.

Temporary, supply staff and volunteers are made aware of the lead person for Child Protection and Safeguarding, and this information is also around the school. Volunteers also undergo an enhanced DBS check and two references are requested.

ALLEGATIONS AGAINST STAFF AND VOLUNTEERS

When an allegation is made against a member of staff (including supply staff and volunteers) to the Headteacher, suspension should not be automatic as this would be distressing for the accused person and disruptive for the school. The head should take account of the seriousness and plausibility of the allegation, the risk of harm to the pupil and the possibility of tampering with evidence, as well as the interests of the person concerned and of the school. Concerns about members of staff (including supply staff and volunteers) are made to the Headteacher (Keeping Children Safe in Education, 2023) and advice should be sought from the Local Authority Designated Officer (LADO). Concerns about the headteacher should be discussed with the Chair of Governors.

If an allegation is made that a professional who is caring for a child has abused them in any way a meeting will be held. Professionals from different agencies will meet to discuss concerns and decide what should happen. These are called “Abuse by Carers” meetings.

The safeguarding unit will chair the meetings and make sure that what is decided is carried out.

In order to safeguard themselves against allegations of abuse, staff should be aware of the following:

- Welfare of the child is paramount (Children Act 1989).
- Staff are responsible for their own actions and behaviour and should avoid any conduct which would lead any reasonable person to question their motivation and intentions.
- Staff should work and be seen to work in an open and transparent way.
- Staff should discuss and/or take advice promptly from their line manager or another senior member of staff over any incident, which may give rise to concern.
- Records should be made of any such incident and of decisions made/further actions agreed, in accordance with school policy for keeping and maintaining records.
- Staff should apply the same professional standards regardless of gender or sexuality.
- All staff should know the name of their designated person for child protection, be familiar with local child protection arrangements and understand their responsibilities to safeguard the protect children and young people.
- Staff should be aware that breaches of the law and other professional guidelines could result in criminal or disciplinary action being taken against them.
- Staff sign a Code of Conduct which details what behaviours are acceptable and what behaviours are not
- Staff have also read and have access to ‘Guidance for Safer Working Practice of those working with children and young people in Education settings’

Staff who are subject to allegations are advised to contact their professional association.

PASSING ON CONCERNS / WHISTLEBLOWING

Staff should acknowledge their individual responsibilities to bring matters of concern to the attention of the Headteacher in writing. See the Whistleblowing Policy for further information.

If a member of staff is dismissed or removed due to safeguarding concerns, or would have been if they had not resigned, a referral must be made to the Disclosure and Barring Service (DBS).

TEACHING AND LEARNING STYLES

Staff are responsible for their own actions and behaviour and should avoid any conflict which would lead any reasonable person to question their motivation and intentions. More detail is given in "Guidance for Safer Working Practice for those working with children and young people in Education settings" which is available on CPOMS and is read by staff annually. A Code of Conduct is signed by staff and also by volunteers/students.

It is unrealistic to suggest that staff should only touch pupils in an emergency. Within the school there is 1:1 contact with the pupils, and all staff must be clear about what constitutes appropriate behaviour and professional boundaries. They should bear in mind that perfectly innocent actions may be misconstrued. They should never touch pupils in ways which may be considered indecent. More detail can be found in our Positive Handling Policy.

If a pupil has difficulty in communicating, he/she should be given the opportunity to express themselves using appropriate communication skills. Staff should not promise confidentiality as certain information will need to be passed on to other agencies. The immediate priority must be to determine whether a child is at risk of significant harm and therefore in need of protection. If this is the case, then there should be an urgent referral to local child protection agencies.

It is not the responsibility of teachers or teaching assistants to investigate suspected abuse, but it is their responsibility to assist Children's Social Care Services by referring concerns and providing information. If a pupil volunteers information their main task is to listen, they should not make assumptions or ask leading questions. However, they should record the information including the time, setting and those present, then pass this information to the Safeguarding Team via CPOMS. (See Records and Monitoring section)

PROVISION FOR PUPILS IN EARLY YEARS FOUNDATION STAGE

Child Protection issues, policy and procedures are applicable for all pupils at Fox Wood School.

RESOURCES

There is a safeguarding notice board in the staff room detailing the members of the Safeguarding Team, EST newsletters, flowchart of what to do if staff have a concern, the Education Safeguarding Team contact details, appropriate policies etc.

All staff have access to 'Keeping Children Safe in Education 2023' and 'Guidance for Safer Working Practice those working with children and young people 2019' (a copy of each is available on CPOMS). All staff have access to the Child Protection Policy and the Safeguarding Policy and read other pertinent policies annually. They then sign to say they have read and understood the policies and information provided.

ICT PROVISION

Online Safety

We have a whole school approach to Online Safety. We participate in Online Safety Training, Safer Internet Day and Online Safety is directly taught to pupils, including how to be safe on the Internet. We also provide regular information for our parents about Online Safety. No pupil accesses the Internet in school using a personal mobile device.

Internet Use

Fox Wood has a clear policy about access to and the use of the Internet. Under no circumstances should adults in school access inappropriate images. Accessing child pornography or indecent images of children on the internet, and making, storing or disseminating such material, is illegal and, if proven, will invariably lead to the individual being barred from work with children and young people. All staff have signed an 'Acceptable Use of ICT Policy and ICT Code of Conduct'. We also have a security monitoring programme called Securus.

Staff must not befriend pupils on social network sites and must not befriend parents or ex-pupils. They should not discuss information about the school on such sites as this could compromise confidentiality. Nor should they detail any information which might lead to the identification of a pupil (past or present) at the school. Further detailed information can be found in the Computing and Online Safety policies.

Filtering and Monitoring

We purchase Warrington Borough Council's Network Service and follow all recommendations which meets the current legislation for appropriate filtering and monitoring. We purchase a managed service from UTL who implement the advised proxy and DNS settings. Staff are made aware of how the web filtering service works during our safeguarding training. Staff exercise care when planning lessons using the Internet and pupils are not left unsupervised when using the Internet. The school procedure is that if a pupil accesses inappropriate material, staff report this to a member of the Safeguarding Team and log the exact details in their classroom ICT log. The Safeguarding Team will then notify WBC and UTL who will use the information recorded to block the material. We also have Securus as an extra layer of security which takes screenshots of material accessed which includes words from the pre-determined risk database. The screenshots are sent directly to the DSL for review and action as appropriate.

Photography, Videos and other Creative Arts

Many school activities involve recording images. These may be undertaken as part of the curriculum, extra school activities, for publicity, or to celebrate achievement. Staff need to be aware of the potential for these aspects of teaching to be misused for pornographic or 'grooming' purposes. Careful consideration should be given as to how these activities are organised and undertaken. Particular regard needs to be given when they involve young or vulnerable pupils who may be unable to question why or how the activities are taking place.

It is recommended that when using a photograph in any capacity the following guidance should be followed:

- If the photograph is used, avoid naming the pupil.
- If the pupil is named, avoid using their photograph.
- Images should be securely stored and used only by those authorised to do so.

Using images of children for publicity purposes will require the age – appropriate consent of the individual concerned and their legal guardians. Images should not be displayed on websites, on social media pages, in publications or in a public place without such consent. The definition of a public place includes areas where visitors to the school have access.

CROSS CURRICULAR LINKS

Advice will be given in order to make use of the curriculum in preventative approaches to child protection. This is discussed in more detail in the PSHCE Policy and the RSE Policy. This includes materials which are designed to help pupils to be less vulnerable to abuse.

Many areas of the curriculum can include or raise subject matter, which is sexually explicit, or of an otherwise sensitive nature. Care should be taken to ensure that resource materials cannot be misinterpreted and clearly relate to the learning outcomes identified by the lesson plan. This plan should highlight particular areas of risk and sensitivity.

Curriculum activities can sometimes include or lead to unplanned discussion about subject matter or a sexually explicit or otherwise sensitive nature. Responding to pupils' questions can require careful judgement and staff may wish to take guidance in these circumstances from a senior member of staff or subject leader.

EQUAL OPPORTUNITIES

In our policy and practice, there is no discrimination.

HOME – SCHOOL LIAISON

The school should help parents to understand its responsibility for the welfare of all pupils. Parents have been made aware that the school has a Child Protection Policy, by reference in the school prospectus and it is on the school website and it states the fact that we may refer cases to other agencies. Parents have no right to information contained in school records which relate to child abuse. However, all factual information will be required in any subsequent case conference or court proceedings which may be attended by the parent of the child.

ELECTIVE HOME EDUCATION

Although many children have positive experiences of home education, for some children it means they are less visible to services that are there to keep them safe and supported. If a parent or carer expresses their intention to educate a child at home, the local authority, school and other key professionals should work together to coordinate a meeting with the parent or carer. This is particularly important for our pupils who all have special educational needs and disabilities (SEND).

REVIEW

This policy will be reviewed on an annual basis and updated where appropriate.

REFERENCES

‘Child Protection – Training for School Staff – Primary and Secondary’ WBC

‘Child Protection – Self Protection Teaching Resources – Primary and Secondary’ WBC

Inspecting Safeguarding – OFSTED

www.warrington.gov.uk (for local arrangements)

Working Together to Safeguard Children 2018

Keeping Children Safe in Education 2023

Guidance for Safe Working Practice for those working with children and young people in education settings – 2019

‘Every Child Matters: change for children’ – DFES 2004



Professional Contribution to Child Protection Conferences

Child(ren)'s Name(s)	Date of Birth

Date of Child Protection Conference	
Report Completed by:	
Agency	

The following are key to a good report:

- Clarity about a child or young person's needs
- Clarity about strengths within the family
- Clarity about deficits
- Evidence to support your assessment and the professional opinion you express
- Your analysis based on the information you have provided

Child young person's developmental needs: *Emotional and Behavioural Development, Family and Social Relationships, Social Presentation, Self care Skills. Identify risks including how you think these might be reduced. Provide evidence for views and professional opinion*

--

Parenting Capacity: *Basic Care, Ensuring safety, Emotional Warmth, Stimulation, Guidance and Boundaries and Stability. Identify risks including how you think these might be reduced. Provide evidence and comment on capacity to make sustained changes*

--

Family and Environmental Factors: *Family History and Functioning, Wider Family, Housing, Employment, Income, Family's Social Integration, Community Resources. Identify risks including how you think these might be reduced*

--

--

Professional opinion of the child's perspective: *What do they think about their situation? How does it make them feel? How does it affect their life? What do they want to change? (Please provide your views based on your knowledge of the child - You are not required to 'interview' or 'question' the child in order to complete this section.)*

--

Analysis of Risk: current and future impact on child: *This should provide a clear understanding of developmental needs and the impact of the risk factors on the child. This should include whether the child is suffering or is likely to suffer significant harm now or in the future.*

--

Recommendations to Conference: *Please note any interventions that have been tried in the past and the outcome and any interventions that you think could be used to reduce the risks you have identified. If this report is for a Review Conference, please comment on the progress and effectiveness of the child protection plan.*

--

You should share your report with the family prior to the conference and a copy of your report should be e-mailed 24 hours before the conference to conference&reviewunit@warrington.gcsx.gov.uk (this is a secure email address).

STAFF CODE OF CONDUCT



1) Our Vision

At Fox Wood staff have a clear shared purpose. This is first and foremost to protect and care for our pupils, and all in our school and college community, whilst ensuring that they have the very best life and learning opportunities possible. Fox Wood staff have adopted the ethos that 'Together We Shine' and as a school and college we continuously strive to improve the experiences and opportunities that our pupils – and their families – have on a daily basis. Our aim is that Fox Wood will be outstanding in all areas, and recognised as such within the wider SEND and local community, and Fox Wood staff are committed to working tirelessly to achieve and maintain this objective.

As a staff team our Aims are:

- To create a happy and secure personalised learning environment and curriculum rich in stimulation, challenge and possibility.
- To ensure all members of the school and college community can grow in self-esteem and develop to their full potential.
- To provide pupils with an education that will equip them for the world beyond the classroom, and to proactively assist in the development of a community that will welcome and value them.
- To develop pupils' communication and interaction skills enabling them to make positive relationships and communicate decisions giving them more control over their lives.
- To develop greater opportunities to work in partnership with all stakeholders, with the shared goal of maximising and enhancing potential through a holistic and united approach.

2) Rationale for the Staff Code of Conduct

This Code of Conduct is designed to give clear guidance on the standards of behaviour all employees of Fox Wood are expected to observe. Our employees are expected to be role models and are in a unique position of influence – they must therefore adhere to behaviour that sets a good example to all the pupils/students within our school and college. As a member of the Fox Wood school and college community, each employee has an individual responsibility to maintain their reputation and the reputation of Fox Wood, whether inside or outside working hours. Every member of Fox Wood staff should maintain public trust and confidence in our school and college by demonstrating honesty, integrity, reasonable standards of behaviour (inside and outside of school and college), and maintaining confidentiality. However, staff have an obligation to share with their manager, or the Designated Safeguarding Lead (or a member of the Safeguarding Team in the DSL's absence) any information which gives rise to concern about the safety or wellbeing of a pupil.

Staff must never promise a pupil – or parent – that they will not act on information that they are told (or actions that they witness) if it compromises safety.

This code of conduct will be revisited annually, and all staff will be expected to read and sign it every September. Signing will indicate that staff have a good understanding of what is expected of them as Fox Wood employees, and that they will follow these expectations in their conduct. All new staff to Fox Wood and Woolston Sixth Form College (employed by Fox Wood) will be required to discuss this as part of their induction, and will be required to sign to say that they have read and understood the expectations contained within.

In school and college there is an inherent risk of real or alleged misconduct by adults. It is therefore important that Fox Wood has a code of conduct which sets out the standards that adults are expected to maintain. This protects the interests of both pupils and staff.

This code of conduct should be read in conjunction with all relevant School and College policies, particularly those relating to Safeguarding and Child Protection. Safeguarding and Child Protection are at the forefront of everything that we do because the welfare of all of our pupils is paramount and it is critical that all Fox Wood employees are aware of the nature of child abuse, and the procedures for dealing with potential cases.

3) General Conduct

- Concerns about a particular pupil should be reported immediately to the Designated Senior Lead for safeguarding (Lianne Buchanan).
- Adults need to be prudent about their own conduct and vigilant about the conduct of others. The Whistleblowing Procedure should be followed if there are any concerns with regard to conduct and any concerns reported in writing to the Headteacher.
- Adults should ensure that what is normal and natural physical contact does not become unnecessary and unjustified. All pupils have a right to safety, dignity and privacy when contact of an intimate nature is required. More detail is in our Intimate Care Policy.
- All staff should ensure that they avoid the use of insulting words when disciplining pupils. Unprofessional personal comments about anyone must not be used. Any sanctions should be in accordance with the School and College Behaviour Policies, and any concerns regarding the escalation of a pupils' behaviour should be discussed with Jade Ashton, Pupil Support Manager, at the earliest opportunity.
- Only staff who have been trained in Team Teach are permitted to use the physical intervention element. However, it should be noted, staff who have not been trained in Team Teach have a duty of care to take reasonable appropriate action in response to a situation. All staff must read IBPs of pupils they are working directly with, and it is the responsibility of the member of staff to request these at the earliest possible opportunity.
- Any form of physical punishment of pupils is unlawful and will not be tolerated.
- Staff should never use their position of trust to intimidate, threaten, coerce or undermine.
- Staff should never allow a pupil to be treated badly or unsafely; including pretending not to know something is happening or failing to report an incident that has occurred.
- Staff should apply the same professional standards regardless of gender, disability, race, age or sexuality.

- Staff should not treat pupils unfairly – including by demonstrating favouritism for another pupil.
- Staff should not use/share confidential or personal information about a pupil or his/her family unless permission has been gained.
- Staff should not discuss school related issues outside of school, or engage in related gossip.
- Staff should not name or refer to pupils or families outside of school
- Dress and appearance should be smart, practical and comfortable and should be appropriate for the tasks you undertake, to ensure your safety and the safety of others.
- Jeans are not appropriate wear for normal day to day duties. They may be worn when accompanying pupils on a planned off-site visit or residential if practical and appropriate. Staff may wear jeans on non-uniform days and inset/training days held on site and should follow the dress code regulations (if applicable) when attending external training.
- Staff will ensure that the policy regarding photographs of pupils is adhered to.
- Staff sign the school acceptable use of ICT policy and must adhere to this.
- Staff must inform the Headteacher if they commit an offence that will be recorded on their DBS. Failure to do this can lead to dismissal.
- Staff will use their fob to gain access/leave the building. Lost fobs must be reported so they can be deleted from the system.
- Staff should present themselves for work free from any impairment due to drugs, alcohol or other substance.
- Smoking including use of E-cigarettes is prohibited in or outside of the school and college buildings, and on the Woolston Learning Village in its entirety.
- Staff must not act in a manner liable to place pupils, colleagues or themselves at risk. The school's Health Safety and Welfare Policy and procedures must be followed.
- Staff should respect the rights and dignity of others and treat everyone fairly and with respect. The school condemns all forms of inappropriate behaviour such as bullying, harassment and victimisation.
- Staff must declare to the Headteacher any financial or nonfinancial interests that could bring about conflicts with the school's interests, including other employment.
- The school name or school letter headed stationery should be used for appropriate school business only. As such, use of the school name or school letter headed stationery should **not** be used for personal business or where personal gain would result.
- School property should be used and stored correctly. Any breakages are to be reported.
- All staff have a copy of the school Health and Safety Handbook.
- All staff must ensure that they read, and follow, Risk Assessments and new procedures in light of changing guidance and Covid19. They must also share in the responsibility of flagging up any Health and Safety concerns to the Senior Leadership Team (via Louise Messham, Assistant Head, in the first instance where possible), and working as part of a team to try and address these in the safest and most positive ways possible.

This code reflects the Code of Conduct for Council Employees which is part of employee's terms and conditions of employment. By signing this you are evidencing that you have read and understood the contents, and that you will ensure that your practice and personal conduct falls within Fox Wood expectations. Should you not understand, or should you disagree with, any of the above you should speak directly to the Headteacher before signing it. It is the

responsibility of each member of staff to ensure that this is signed and returned to Allison Wright by 1.30pm on Friday 4th September at the latest.

4) Consequences of breaching the Code of Conduct

Staff should be aware that failure to comply with this Code of Conduct could result in disciplinary action including, but not limited to, dismissal.

Staff are also reminded that this Code of Conduct is not exhaustive. The primary responsibility of the Governors and Headteacher is towards the welfare of all of our pupils, and all of our staff. Individuals are encouraged to take a common-sense approach towards their conduct. Any staff member who has a concern or is unsure about an event that has arisen should discuss the matter with a member of the Senior Leadership Team, or the Chair of Governors, as soon as possible.

I hereby confirm that I have read, understood and agree to comply with the Staff Code of Conduct. I understand also that it is my responsibility to sign and return this document to the School Office Manager (Allison Wright), and to retain a copy for my own records and to refer to as required.

Name:

Signature:

Date:

CODE OF CONDUCT FOR VOLUNTEERS

STUDENTS & WORK EXPERIENCE

In a school where adults and young people work closely with pupils, there is an inherent risk of real or alleged misconduct by adults. It is therefore important that Fox Wood has a code of conduct which sets out the standards that adults are expected to maintain. This will protect the interests of both pupils and staff.

- The welfare of the pupil is paramount and it is critical therefore that adults are aware of the nature of child abuse and the existing procedures for dealing with potential cases.
- Concerns about a particular pupil should be reported immediately to the Designated Senior Person for Safeguarding or Headteacher.
- Adults need to be prudent about their own conduct and vigilant about the conduct of others.
- Adults assisting in school will not be left alone with a pupil, under any circumstances, until a DBS check for Fox Wood School has been undertaken.
- Adults should use their discretion to ensure that, what is normal and natural physical contact does not become unnecessary and unjustified.
- Any form of physical punishment of pupils is unlawful and will not be tolerated.
- Adults should apply the same professional standards regardless of gender, disability age or race.
- They should not use/share confidential or personal information about a pupil or his/her family.
- A person's dress and appearance should be appropriate to the role and should be appropriate for the tasks they undertake.
- All pupils have a right to safety, dignity and privacy when contact of an intimate nature is required.

All adults in education settings should know the name of the school's Designated Senior Lead for Safeguarding and know and follow relevant Child Protection policy and Safeguarding policies and procedures.

At Fox Wood School Lianne Buchanan is the Designated Senior Lead for Safeguarding



Web Filtering for Schools – WBC IT Statement February 2023

Web filtering is a solution that controls what information users can and cannot access over the Internet.

This update is provided to help schools and their stakeholders understand the current solution in place for Schools that purchase WBC's Network Service.

Statutory Guidance on 'Appropriate' Web Filtering

There is statutory guidance on what the UK law deems appropriate for protection of children with relation to internet access:

The Revised Prevent Duty guidance for England and Wales: ([Link](#))

"...to ensure children are safe from terrorist and extremist material when accessing the internet in school, including by establishing appropriate levels of filtering..."

The DfE's Keeping Children Safe in Education 2022 guidance: ([Link](#))

"141. Whilst considering their responsibility to safeguard and promote the welfare of children and provide them with a safe environment in which to learn, governing bodies and proprietors should be doing all that they reasonably can to limit children's exposure to the above risks from the school's or college's IT system. As part of this process, governing bodies and proprietors should ensure their school or college has appropriate filtering and monitoring systems in place and regularly review their effectiveness. They should ensure that the leadership team and relevant staff have an awareness and understanding of the provisions in place and manage them effectively and know how to escalate concerns when identified. Governing bodies and proprietors should consider the age range of their children, the number of children, how often they access the IT system and the proportionality of costs versus safeguarding risks."

"142. The appropriateness of any filtering and monitoring systems are a matter for individual schools and colleges and will be informed in part, by the risk assessment required by the Prevent Duty."

Ofsted's School Inspection Handbook 2022

*"28. We do not require schools to:
use a digital platform to monitor pupils' internet use, and we do not specify how these platforms should operate"*

The Council's Web Filtering Service

The Council's service is provided as part of the Network Service using a 3rd party supplier, Forcepoint. When this service was procured WBC considered the statutory guidance and believe the solution provides 'appropriate web filtering'.



The technology uses a category system to define what type of content each website represents, such as education, business, drugs, malware etc. That category determines whether a school can or cannot access that specific site.

Forcepoint have an Advanced Classification Engine that performs in depth, real-time inspection of content to categorise web sites and protect users from accessing inappropriate content and malware.

Each School has categories deemed potentially harmful and/or inappropriate blocked by default and then can have rules to block or allow certain sites as per their individual requirements.

The service, transparent to the end user, intercepts internet traffic from across the School's Network(s) and is designed to protect staff and learners as much as possible.

Forcepoint have provided a response to the UK Safer Internet Centre's Monitoring Checklist, it can be viewed [here](#).

All internet traffic that passes through the WBC internet connection will be filtered and there is no requirement for specific configuration on the hardware (PCs, laptops, Ipads, Chromebooks etc...).

Industry Standards

The UK Safer Internet Centre States the following: ([Link](#))

"Recognising that no filter can guarantee to be 100% effective, schools should be satisfied that their filtering system manages the following content (and web search):

- Discrimination – Promotes the unjust or prejudicial treatment of people with protected characteristics of the Equality Act 2010
- Drugs / Substance abuse – displays or promotes the illegal use of drugs or substances
- Extremism – promotes terrorism and terrorist ideologies, violence or intolerance
- Malware / Hacking – promotes the compromising of systems including anonymous browsing and other filter bypass tools as well as sites hosting malicious content
- Pornography – displays sexual acts or explicit images
- Piracy and copyright theft – includes illegal provision of copyrighted material
- Self-Harm – promotes or displays deliberate self-harm (including suicide and eating disorders)
- Violence – displays or promotes the use of physical force intended to hurt or kill"

If a School does find a website that they feel is inappropriate it should be reported to the Council's IT team for investigation, WBC are able to block websites as the need arises and inform Forcepoint so they can take the appropriate categorisation action.

The internet currently contains in excess of 1 billion sites, with an estimate of 250,000 new websites appearing every day. Occasionally things can slip through and be categorised incorrectly. This will occur for any provider offering filtering services. In our experience this does not happen often for Schools with the WBC Network Service.

It would be a danger to allow access to sites that have not yet been categorised. As a default setting, WBC block any 'uncategorised' sites to minimise this risk.



If a School attempts to access a new site or one that is not known to the database they will find that access is denied. For genuine websites they can log a call with WBC IT and the site will then be categorised appropriately and access will be allowed.

Guidance: Filtering Exceptions & SafeSearch

Exceptions

There are some circumstances where a filtering system does not appear to take any effect, these are:

- Google images
- YouTube, or similar video sharing platforms
- Other websites that collect and display clipart and/or images
- Website adverts

Schools have occasionally reported that when using Google images it has brought back an image that was considered inappropriate. This is because:

- WBC allow access to Google as a website.
- Google is actually a search engine and searches the internet, creating links to any sites and/or media found regardless of actual content.
- So when you search in Google you can receive a very wide response from seemingly innocent search words.

SafeSearch

The search function within Google does have something called "SafeSearch" and this is enforced by default.

Google's statement around the "SafeSearch" service is as follows

"You can filter explicit search results on Google, like pornography, with the SafeSearch setting. SafeSearch isn't 100% accurate. But it can help you avoid explicit and inappropriate search results on your phone, tablet, or computer."

Google then go onto state:

"We do our best to keep the SafeSearch filter as thorough as possible, but sometimes explicit content, like porn or nudity, makes it through. If you have SafeSearch turned on, but still see inappropriate sites or images, let us know."

They then provide instructions on how to report inappropriate content to them. Google also provide additional disclaimers about content that may be accessible via their website.

The Council's web filtering system allows access to Google and to Google images, but does not filter the images or content viewed directly within the site, as this is controlled directly by Google.

Google also own YouTube and offer similar advice relating to videos. As with Google images, the Council's web filtering service controls if you can or cannot access YouTube. SafeSearch is enabled by default, but occasionally inappropriate videos can appear.



Outside of Google images, there are other websites that can collect clipart from the internet and display it for you. These sites are potentially higher risk as they do not operate under the Google SafeSearch option and provide little to no way of reporting back inappropriate content.

Advertising

Many websites carry adverts for other websites. Sometimes the adverts are trying to sell you something. Just as often they are "clickbait" and if you click on the link the content you see isn't related to the advert.

These adverts may use inappropriate imagery in order to attract people to click on the link. The web filter is unable to block these adverts. The only action WBC could take for schools is to block the website showing the advert but in practice this is not proportional. So many sites contain adverts you could end up blocking half of the internet.

The blocking in itself may be in itself inappropriate as the guidelines warn against over blocking.

A statement from the Safer Internet Centre says:

"Schools will need to "be careful that "over blocking" does not lead to unreasonable restrictions as to what children can be taught with regards to online teaching and safeguarding..."

Guidance: Monitoring and Reporting

The UK Safer Internet Centre States the following: ([Link](#))

"There are a range of monitoring strategies and systems however the appropriate monitoring strategy selected should be informed by your risk assessment and circumstances. It is also vitally important to also review and refine the relevant policies as part of assessing (or implementing) a monitoring strategy or system. The following are examples.

1) Physical Monitoring

Physical monitoring can contribute where circumstances and the assessment suggests low risk, with staff directly supervising children on a one to one ratio whilst using technology. This could be: physical supervision of children whilst using the Internet; assigning additional classroom support staff to monitor screen activity; or actively monitoring all screen activity during a lesson from a central console using appropriate technology.

2) Internet and web access

Some Internet Service Providers or filtering providers provide log file information that details and attributes websites access and search term usage against individuals. Through regular monitoring, this information could enable schools to identify and intervene with issues concerning access or searches.

3) Active/Pro-active technology monitoring services

Where the risk is assessed as higher, Active or Pro-active monitoring technologies may be suitable. These specialist services provide technology based monitoring systems that actively monitor use through keywords and other indicators across devices. These can prove particularly effective in drawing attention to concerning behaviours, communications or access."

Currently Monitoring and Reporting is not included as standard as part of the Network Service, although log file reports can be provided if requested. The caveat with these reports is that they take time to produce and, if your School does not have the system configured with your Curriculum Active Directory it will display information that makes it hard to identify who accessed the inappropriate content, it will look at the IP address of the device and this will help identify the device that was used but not necessarily who was logged into it at that time.

If the School assesses the risks and you believe that the Monitoring and Reporting provided by WBC does not meet your individual requirements and policy/strategy there are some options available:

- **WBC review and change service.** If a significant number of Schools request this we are happy to look at the options, up to now there has not been enough Schools requesting this.
- **School procures their own solution.** Some Schools have procured and implemented their own web filtering service and had it installed on their School Network(s).

Please be aware when looking at any alternative options that there are some considerations that Schools need to be aware of:

- **Cost vs Benefit** – as you would expect, the more functionality a system offers the more it is likely to cost. The School should consider whether the benefits gained mean value for money.
- **Configuration** – to take advantage of some systems monitoring and reporting it requires extra configuration from the School's IT provider(s) and this should be taken into account when costing up a service, i.e. to monitor who is accessing something you may need to have logins set up for each individual pupil and have this linked to the system.
- **Training / staff responsibilities** – having a system that reports on inappropriate internet activity or alerts the school at the time when something is being accessed (real-time monitoring and alerts) will require staff at the school to be trained in how to use the system and deal with any alerts, also these staff members would need time to carry out these tasks.

Recommendations for Schools

WBC have taken the necessary steps to procure, provide and support a web filtering solution appropriate for Schools. However, each School also has responsibilities to ensure their Networks and IT provisions are as safe as possible.

The following are WBC's recommendations for schools:

- School leaders should regularly review which websites (like You Tube, etc.) the School wishes to be blocked by default and inform WBC so that the correct policies can be applied to the School.
- If a School user finds a website they feel is inappropriate, report it to WBC.
- If the School's IT Network / Curriculum Network is supported by another supplier / member of School staff then the School should ensure they implement the advised proxy and DNS settings. This will ensure Google SafeSearch is enabled across the School.
 - Proxy – We no longer operate a proxy service and so NO proxy settings are required to access the Internet on the Curriculum Network.

- **DNS** – To ensure Google SafeSearch is enabled you must use the following DNS servers:
Primary Setting - 5.61.120.6 and Secondary Setting - 5.61.120.10.
Please ensure no other DNS settings are present (including Google settings) as this has the potential to override the WBC settings and compromise SafeSearch for the School.

- The School should have robust policies in place for dealing with any instances where a user accesses inappropriate material.
- Schools should ensure staff are aware of how the web filtering service works.
- Teaching staff should exercise care when planning lessons that use the internet. Appropriate levels of supervision should be exercised.

Considerations for Schools

For all of the reasons mentioned, this is a complex area to understand and make decisions about. This is compounded because:

- The legislation is constantly evolving
- The legislation is open to some interpretation and schools are left to a large part to try and determine what this means to them
- There is the influence of external providers who in some cases are trying to get to schools to buy things they don't necessarily need in order to profit financially

To help you navigate this:

- We believe the service offered by the Council meets the requirements of the current legislation for appropriate filtering as defined earlier in this document
- As and when the legislation changes in the future, we will review our offering and amend it accordingly. Changes to service prices may or may be not needed depending on how the requirements change.

Some schools have stated their interest in more advanced service options such as increased reporting frequency, activity by user, age differentiation, real-time reporting, etc.

It is ultimately the decision of the school as to how critical they feel these requirements, what the benefits are and how proportionate these are to the costs involved.

The information provided in this document is aimed to support Schools in understanding the service in place and assist with assessing the options going forward.